



# SOP

## Using the PDA with datalogger and PC



Compiled by

**Julien D'Ascenzio**

May 2006

Copyright © 2005 Southern DataStream, Inc.

## D) INSTALLATION

Before use the PDA, you must install two software in your PC. You can find them in the office or maybe they are already installed in your PC.

- Palm Deskop
- PConnect

After install them, don't forget to press the 'HotSync' button on the PDA terminal which is connected with the PC.



'HotSync' button

## II) Connection

### a) Connecting PDA and CR-200

You have two cables:

- On the first, you have one side with a *PDA Port* and an other side with a *RS232 Female Port*
- On the second, the two side have a *RS232 Male Port*



+



+



### b) Connecting PDA and CR-10X

You have two things:

- A cable with one side with a *PDA Port* and an other side with a *RS232 Female Port*.
- “SC92A” device.



+



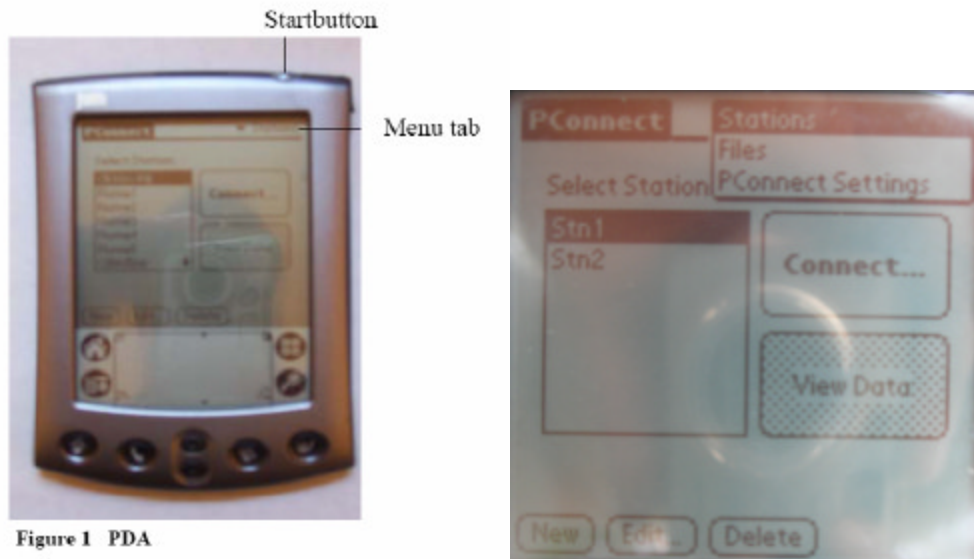
+



### III) Communication between the PDA and the CR200/CR10X

#### A) Menu General

1. Press the white button on the right side of the top to start the PDA
2. Choose the PConnect in the start menu. If you cannot find it, make sure that the tab on the right top of the screen is on 'all'
3. Connect the PDA with the CR200/CR10X
4. When you click on 'station' at the top right, you could see this menu:



**Files:** In this section, you could see all the programs you have in the Handheld or in the card.

**PConnect Settings:** Hanheld PackBus Address: 4091

#### C) Station

##### 1) Create a station

1. Press "New" button
2. Select your Datalogger Model : CR200 Series or CR10/CR10X
3. Make this configuration

#### **CR200 Series (for the flumes)**

**Station Name:** Name of your Station  
**Logger:** CR200 Series  
**PakBus Address :** ( Flume 1 : 11,  
Flume 2: 12 ..... Flume 5 : 15)  
**Data Location:** Handheld (data store in  
the PDA), Card (data store in the card)  
**Communication:** Serial

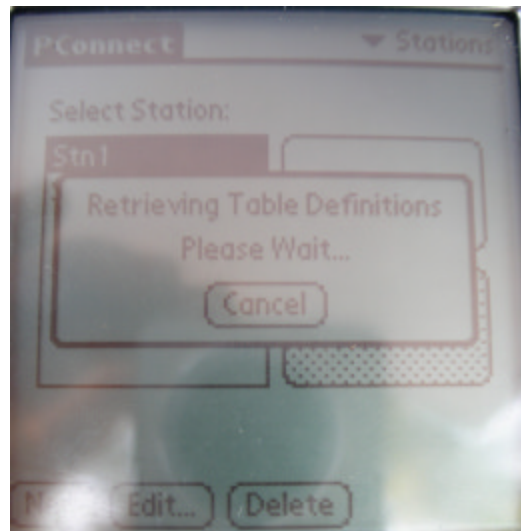
#### **CR10/CR10X**

**Name:** Name of your Station  
**Program:** None  
**DataLogger:** CR10/CR10X  
**Security Code:** 0  
**Data Location:** Handheld (data store in  
the PDA), Card (data store in the card)  
**Communication:** Serial

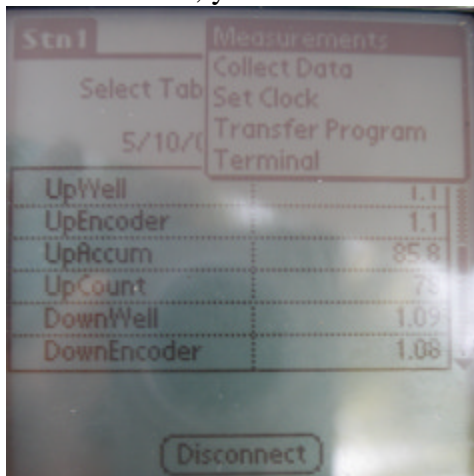


## 2) Connection

To connect with a station click on connect.



With the menu, you could make different things with the station.



### 3) Measurement

In this, you could see the value of the different tables:

- **Status** : it's the configuration of the CR200 (Program name, OS ....)
- **Data**: The last data store on the memory
- **Public**: The data in live (refresh all minutes). You could change some values like UpWell and DownWell to calibrate the encoder. Click on the value, choose edit, put the new value and click OK.

### 4) Collect Data

You could download the data. The configuration is like this:

**Select Table**: Data

**Store Data**: in Handheld (data store on the PAD), on card (data store on the memory card)

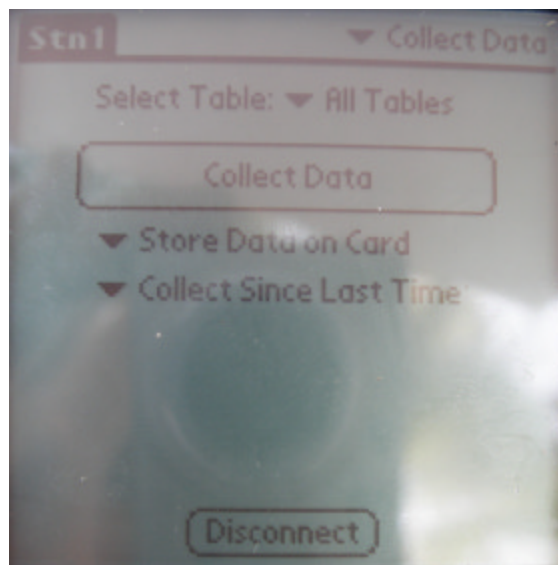
**Collect**: Since Last time (Collect the data save after the last collection) or All (take all the data of the memory), Collect Last # of records (Collect only a definite number of Data)

After the collection of the data you could transfer them in the PC.

1. Connect the PDA at the PC with the PDA terminal then Press the 'HotSync' button.

2. After you could find your data in this folder :

C:\Campbellsci\PCconnect\*USERNAME*'. This folder corresponds of the installation by default of PConnect. Your username is the one you use for the installation (SDS for certain PC). The name of the file is '*station*'\_DATA.dat. '*station*' is the name of your station called in the PDA. It's could be like Stn1, Stn2...



### 5) Set Clock

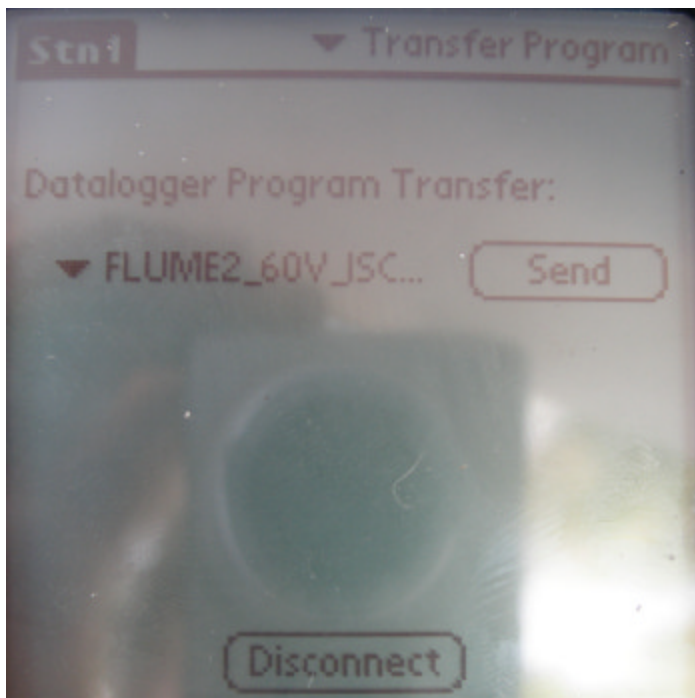
You synchronize the hour of the PDA with the one in the CR200

### 6) Transfer Program

Before you must have put a program on the PDA with the PC

1. Put your compiled file in this folder: C:\Campbellsci\PCconnect\'*USERNAME*'. This folder corresponds of the installation by default of PCconnect. Your username is the one you use for the installation of PCconnect : SDS for certain PC.
2. Connect the PDA at the PC with the PDA terminal then Press the 'HotSync' button

In the PDA, you could find your program in the list. Click on send to transfer your program.



### 7) Terminal

This could be useful to configure the encoder.